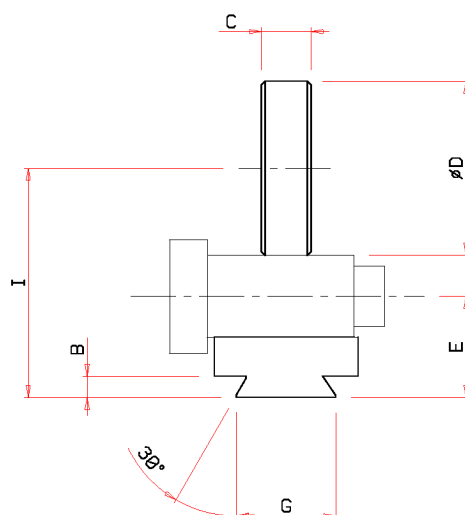
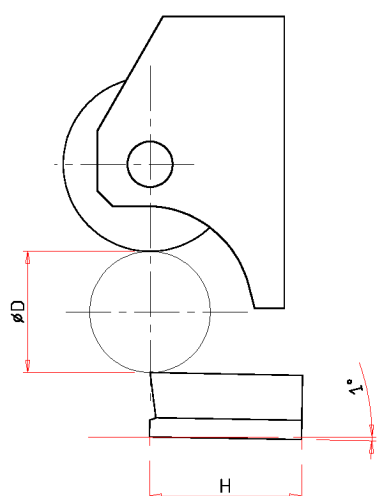
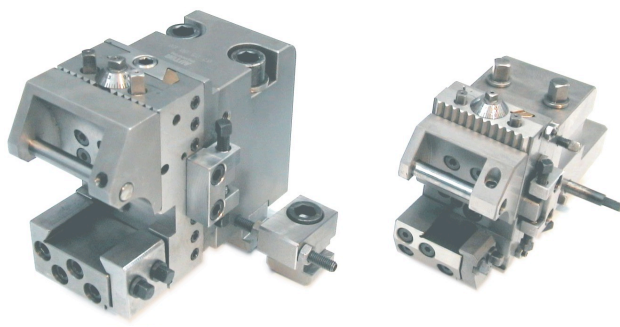


Attachment for multispindle automatics used for the machining of cylindrical or profiled surfaces of pieces rotating on the main spindle.

This tool allows to obtain high precision diametral turnings, with the very tight tolerances usually required for further machining (e.g. rolling threads).



Size	$\varnothing D$		B	C	$\varnothing D$	E		G	H	I	
	Min	Max	Max	Max	Max	Min	Max	Max	Max	Min	Max
Gr.1	3	26	3	26	23	16.5	20.5	23	23	29.5	44.5
Gr.2	2	32	8.5	38	24	29	31	40	31	44.5	55
Gr.4	13	48	10	46	36	41	42.5	50	39.5	70.5	84.5